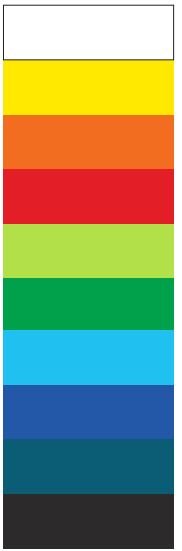
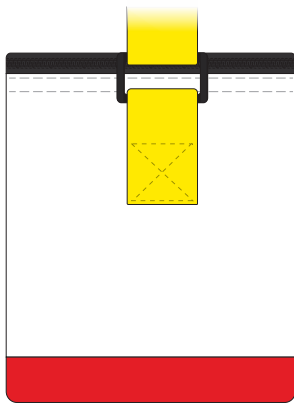


30% of Actual Size
Sublimation



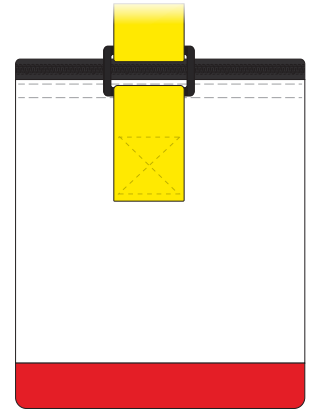
LID (TOP) PANEL



LEFT GUSSET



FRONT PANEL



RIGHT GUSSET

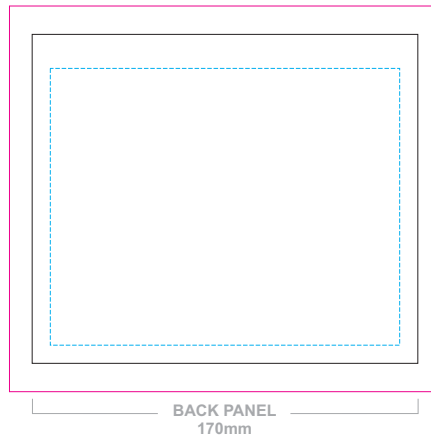
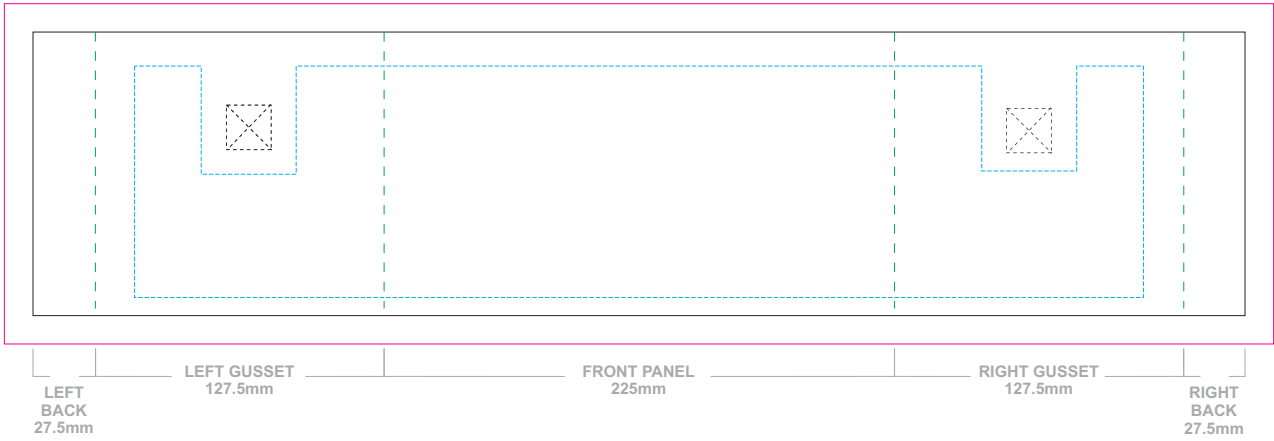
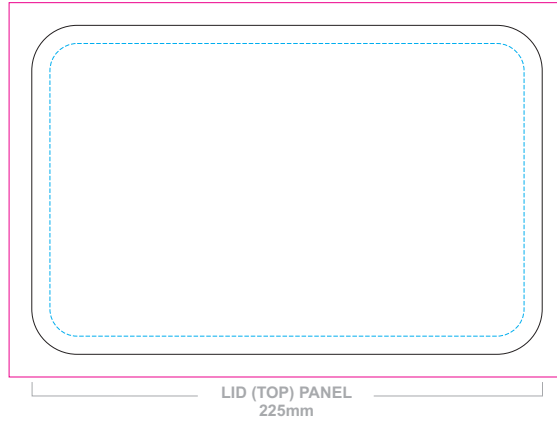


RIGHT
BACK

BACK PANEL

LEFT
BACK

30% of Actual Size
Sublimation Template



Blue Line = The SIGNIFICANT PRINT AREA
(Keep all critical images & text within this box)
Black Line = Maximum print area
Pink Line = Bleed off to here
Green Line = Fold Line